



FORMATION TESTER

Measures the formation (flocculation dispersion) in papers.

For:



✓ PAPER



✓ BOARD



✓ TISSUE



✓ ModularLine-
capable



✓ ProbeNet-
capable

MOST IMPORTANT BENEFITS

- ✓ Easy operation via the integrated touch screen
- ✓ Measuring speed: 4 pictures per sec
- ✓ Distribution of the flake size into 6 classes
- ✓ Proved algorithm for calculating the formation index

PRODUCT DESCRIPTION

The specially developed ModularLine housing, which comes as standard with user-friendly touch screen and the FRANK-PTI connection, offers an exceptional basis for the high-precision measurement technology of the formation tester. This consists, in essence, of a high definition CCD camera system and the lighting unit located opposite, which illuminates stroboscopically. To prevent wear to the touch screen, the separate start button on the device can be used. The ModularLine formation tester can also be used as a separate laboratory device, as well as for profile testing as a module on the ModularLine.

TEST DESCRIPTION

The sample to be tested is placed in the measurement area. After pushing the start button, the sample is illuminated by the transmitted light unit using a stroboscope. The CCD camera system takes a high-definition picture of the measurement area. The light intensity is automatically regulated during this process, to bring the picture to a comparable grey scale level. This allows samples with different grammage and opacity to be directly compared. The picture taken is displayed on the touch screen and the floc size and formation index are calculated and displayed numerically. The pictures taken can be stored and retrieved at any time to enable a manual evaluation process.



Display of images and comparable values

TECHNICAL DATA

DEVICE/INSTRUMENT

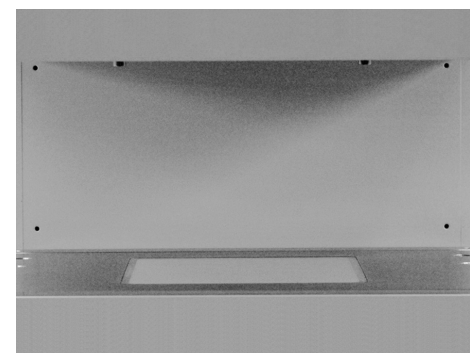
- Easy operation via the integrated touch screen
- Measuring range: 5 – 300 g/m² (depending on the opacity)
- Measuring area: 120 x 120 mm
- Resolution: 250 µm
- Measuring speed: 4 pictures per sec
- Proved algorithm for calculating the formationindex
- Distribution of the flake size into 6 classes (1, 2, 3, 6, 10 and 16 mm)
- FRANK-PTI standard-ports (see page 6)
- Compatible with ProbeNet (see pages 84 – 87)
- Useable as ModularLine unit

INSTALLATION REQUIREMENTS

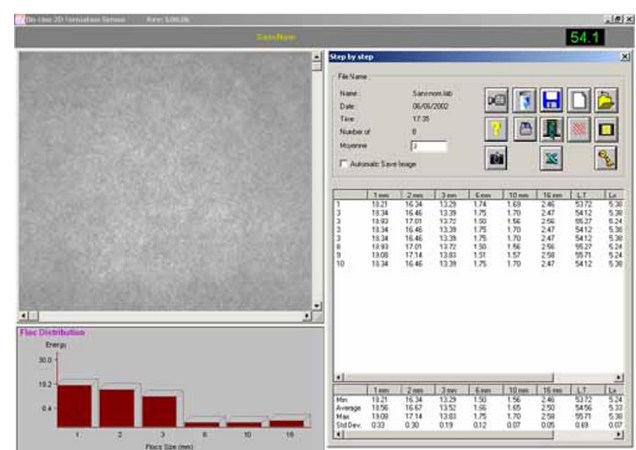
Electrical connection	110 – 230 V / 50 – 60 Hz
Water connection	No
Compressed air	No

APPLICABLE STANDARDS

No standards available



Transmitted light unit with opal glass



Display of images and comparable values