



GLOSS METER

For measuring the gloss on paper and board.

For:



✓ PAPER



✓ BOARD



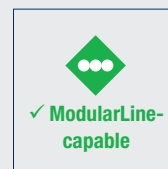
MODELS

AVAILABLE MEASURING DIRECTIONS

- Top side, machine- and cross direction
- Top side, machine direction
- Top side, cross direction
- Bottom side, machine direction
- Bottom side, cross direction
- Top- and bottom side, cross direction
- Top- and bottom side, machine direction

AVAILABLE SINGLE- OR MULTI ANGLE SENSOR

- TAPPI: 20° / 75°
- DIN: 45° / 60° / 75°



✓ ModularLine-capable



✓ ProbeNet-capable

MOST IMPORTANT BENEFITS

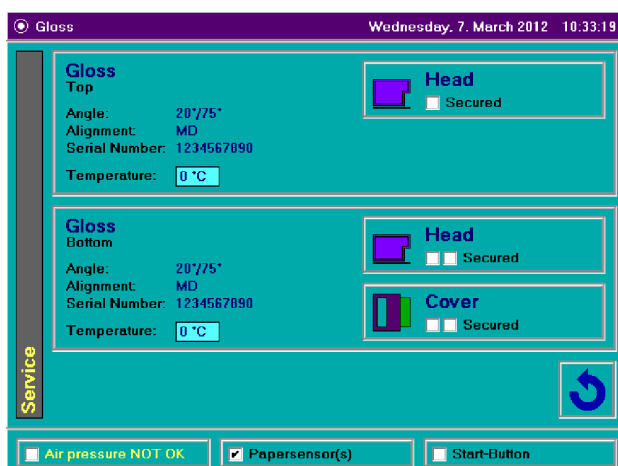
- ✓ Easy operation via the inbuilt touch screen
- ✓ Based on the latest LED technologys
- ✓ Up to four different measuring directions
- ✓ Single- or multi angle sensors availabe

PRODUCT DESCRIPTION

The specially developed ModularLine housing, which comes as standard with user-friendly touch screen and the FRANK-PTI connection (see page 12), offers an exceptional basis for the high-precision measurement technology of the gloss meter. This consists, in essence and depending on measurement direction, of single or multi-directional sensors, which are equipped with the latest LED technology. To prevent wear to the touch screen, the separate start button on the device can be used. The ModularLine gloss meter can also be used as a separate laboratory device, as well as for profile testing as a module on the ModularLine.

TEST DESCRIPTION

The sample to be tested is placed in the measurement area. On pressing the start button, the measurement head automatically lowers onto the sample. The spring-mounted base platen guarantees the flatness of the sample required by the standards for gloss measurement. The device is based on the latest LED technology, which reduces measurement to a few seconds and significantly increases measurement quality. The measurement results are displayed on the touch screen and saved as statistics.



Service menu

TECHNICAL DATA

DEVICE/INSTRUMENT

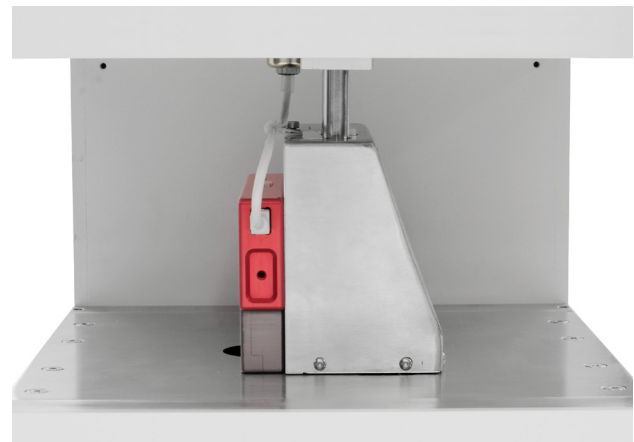
- Easy operation via the integrated touch screen
- Latest LED technology
- 0 – 100 gloss unit (0 – 100%)
- Measuring area: 10 x 15 mm
- FRANK-PTI standard-ports (see page 6)
- Compatible with ProbeNet (see pages 84 – 87)
- Useable as ModularLine unit

INSTALLATION REQUIREMENTS

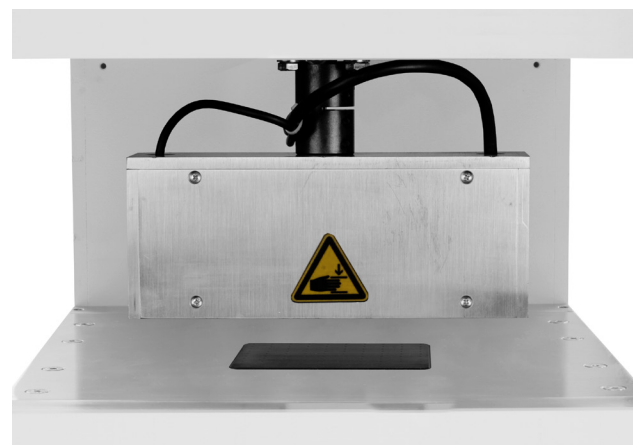
Electrical connection	110 – 230 V / 50 – 60 Hz
Water connection	No
Compressed air	4 – 6 bar

APPLICABLE STANDARDS

- DIN EN 14086
- ISO 8254-1 | -2 | -3
- TAPPI T480, T653



Measuring head (top side, MD)



Turnable sensor for MD and CD measurement