



VERSEIDAG AIR PERMEABILITY TESTER

For:



✓ PULP



✓ PAPER

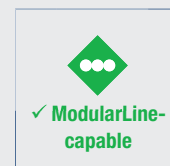


✓ BOARD



✓ TISSUE

For determination of air permeability of textiles and glass fibre mats.



✓ ModularLine-capable



✓ ProbeNet-capable

MOST IMPORTANT BENEFITS

- ✓ Easy operation via touch screen
- ✓ Changeable measuring areas and heads
- ✓ Measuring range: 1 – 200 l/min

PRODUCT DESCRIPTION

The specially developed ModularLine housing, which is equipped as standard with user-friendly touch screen and the FRANK-PTI connections, offers an exceptional basis for the high-precision measurement mechanism of the Verseidag air permeability tester. It is used to determine the air permeability of very porous materials, such as non-woven material. Its changeable measuring areas and heads (5 – 20 cm²) allow the device to be easily adjusted according to requirements. The difference in pressure of 0.1 or 0.2 kPa can be precisely regulated. The Verseidag air permeability tester can both be used as an independent laboratory device, and also for profile measurement as a module of the ModularLine.

TEST DESCRIPTION

The material to be tested is placed in the measurement area. On pushing the start button, the measurement head lowers automatically onto the sample. The preset high pressure of 0.1 or 0.2 kPa is regulated. Then the through-flow is measured and calculated taking into account the previously selected measurement area. This allows the results of tests with different measurement areas to be directly compared. It is possible to select either a 10 or 20 mm water column as measurement pressure specification. The values are displayed on the touch screen. If more than one measurement is carried out, these can be compared as statistics and their minimum, maximum and standard deviation displayed.



Measurement cylinder with changeable measuring head

TECHNICAL DATA

DEVICE/INSTRUMENT

- Easy operation via the integrated touch screen
- Changeable measuring areas and heads (5, 10 or 20 cm²)
- Measuring range: 1 – 200 l/min
- FRANK-PTI standard-ports (see page 6)
- Compatible with ProbeNet (see pages 84 – 87)
- Useable as ModularLine unit

INSTALLATION REQUIREMENTS

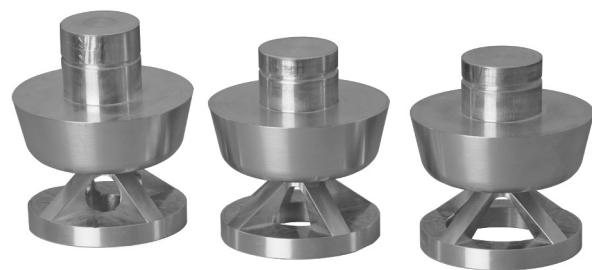
Electrical connection	100 – 230 V / 50 – 60 Hz
Water connection	No
Compressed air	6 bar

APPLICABLE STANDARDS

- DIN EN ISO 9237



Changeable measuring areas



Changeable measuring heads